



INSTALLATION GUIDELINES

RASCOTec Crack Inducer

GENERAL

The spacing of the crack-inducing units always requires prior calculation as it depends on the reinforcement. Widened crack-inducing units shall always be incorporated in such a way as to ensure that the base units abut the reinforcement (on the later grouting side).

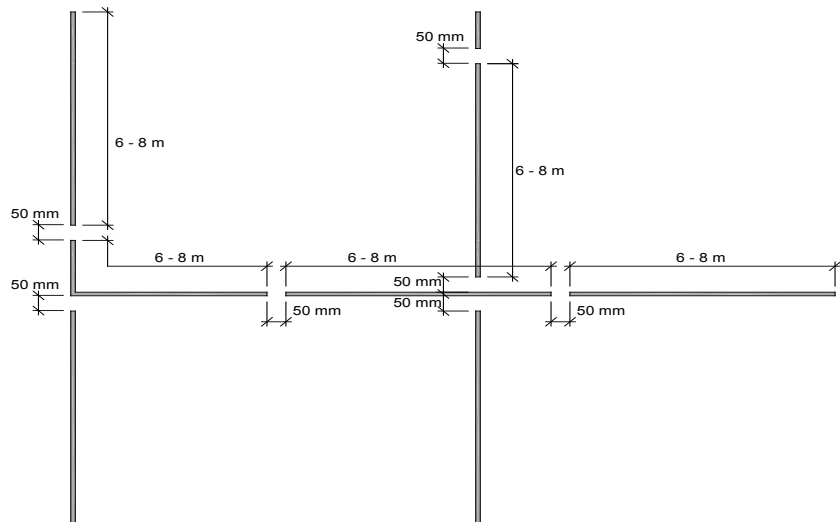
PERSONAL PROTECTIVE EQUIPMENT

- Wear suitable protective gloves and goggles



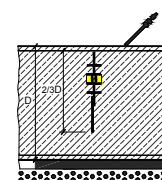
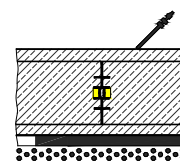
GROUTING SECTION LENGTH

The optimum grouting section length (i.e. continuous length for grouting) totals approx. 6 - 8 m.



INCORPORATION (GROUND SLABS, SUSPENDED SLABS, WALLS)

- for element thicknesses up to 40 cm: from reinforcement to reinforcement
- for element thicknesses exceeding 40 cm, the base unit shall be widened (to cover at least 2/3 of element thickness)



FIXING

- the spacing of the support stirrups shall be such as to prevent the units from buckling during concreting
- the crack-inducing units shall be fixed with support stirrups on either side

END JOINTS WITHIN GROUTING SECTION

- push on connector cap and fix using self-drilling screws or cable ties

ANGLES/INTERSECTIONS WITHIN GROUTING SECTION

- mitre-cut crack-inducing units to required angle and join by hot-plate butt welding

GROUTING SECTION ENDS

- leave 5 - 7 cm gap between grouting section ends
- fit stopper caps at grouting section ends
- mark grouting section ends

ANGLES/INTERSECTIONS AS GROUTING SECTION ENDS

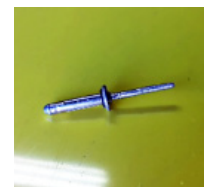
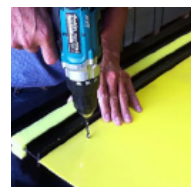
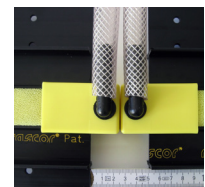
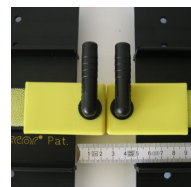
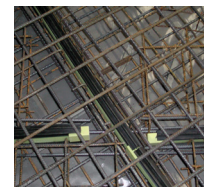
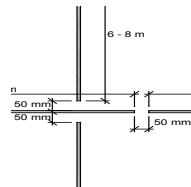
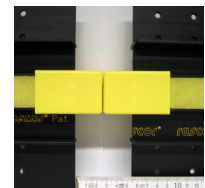
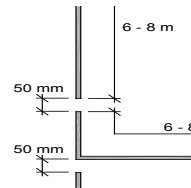
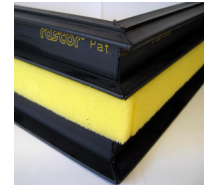
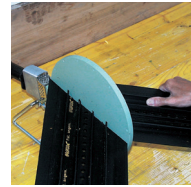
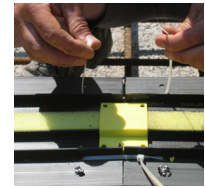
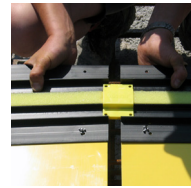
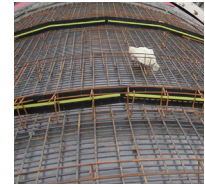
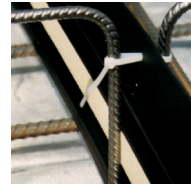
- leave 5 - 7 cm gap between grouting section ends
- fit stopper caps at grouting section ends
- mark grouting section ends

INSTALLATION WITH CONNECTOR HOSE

- leave 5 - 7 cm gap between grouting section ends
- push on feeder caps
- push on connector hose, carry to top/outside and fix securely

INSTALLATION WITH TARGET

- push on feeder caps
- place target on grouting side. Connect feeder cap with target using connector hose and fix securely
- mark exact location of target



LEGAL NOTICE: The information provided on the use and application of our products in this technical data sheet is based on the present state of our knowledge. The customer shall bear sole responsibility for the proper specification, application and use of the products in line with the intended purpose, project-specific conditions and external actions. The most recent technical data sheet shall apply. The current technical data sheets are available at www.rascor.com. Our General Terms of Business shall form an integral part of this technical data sheet.

Rascor International Ltd.
Gewerbstrasse 4
CH-8162 Steinmaur / Switzerland
Phone: +41 (0)44 857 11 11
Fax: +41 (0)44 857 11 00
www.rascor.com